

GROUP EXERCISE - DISCUSS

DRIVERS OF VULNERABILITY: THE ROLE OF CONTEXT

Use your team's first couple of minutes to get familiar with Jamboard.

This is a group exercise about the role of context. Please share an example of how aspects of political economy, historical factors or cultural and social drivers in a context you have worked in have impacted vulnerability and inequalities. How might these different drivers relate to one another? Consider BHA contexts, if possible.

The exercise is 20 minutes. One group should share back in the plenary after the group exercise.

Reminder on how to use Google Jamboard

The image shows a Google Jamboard interface with several instructional callouts:

- Top Callout:** "Switch between pages from this arrow button and make sure you are on the page for your own group." (Points to the page navigation arrow in the top right).
- Left Callout:** "Enter your responses from the sticky note button" (Points to the sticky note icon in the left toolbar).
- Center Callout:** "You can move the notes around by dragging them and resize by dragging from the corner. To change the color, double click on the note and select the color." (Points to a yellow sticky note labeled "Sample Response").
- Bottom Callout:** "The group number is also given on the page, so make sure you are on your own group's page." (Points to a "GROUP 1" label in the bottom right).

The Jamboard content includes three questions:

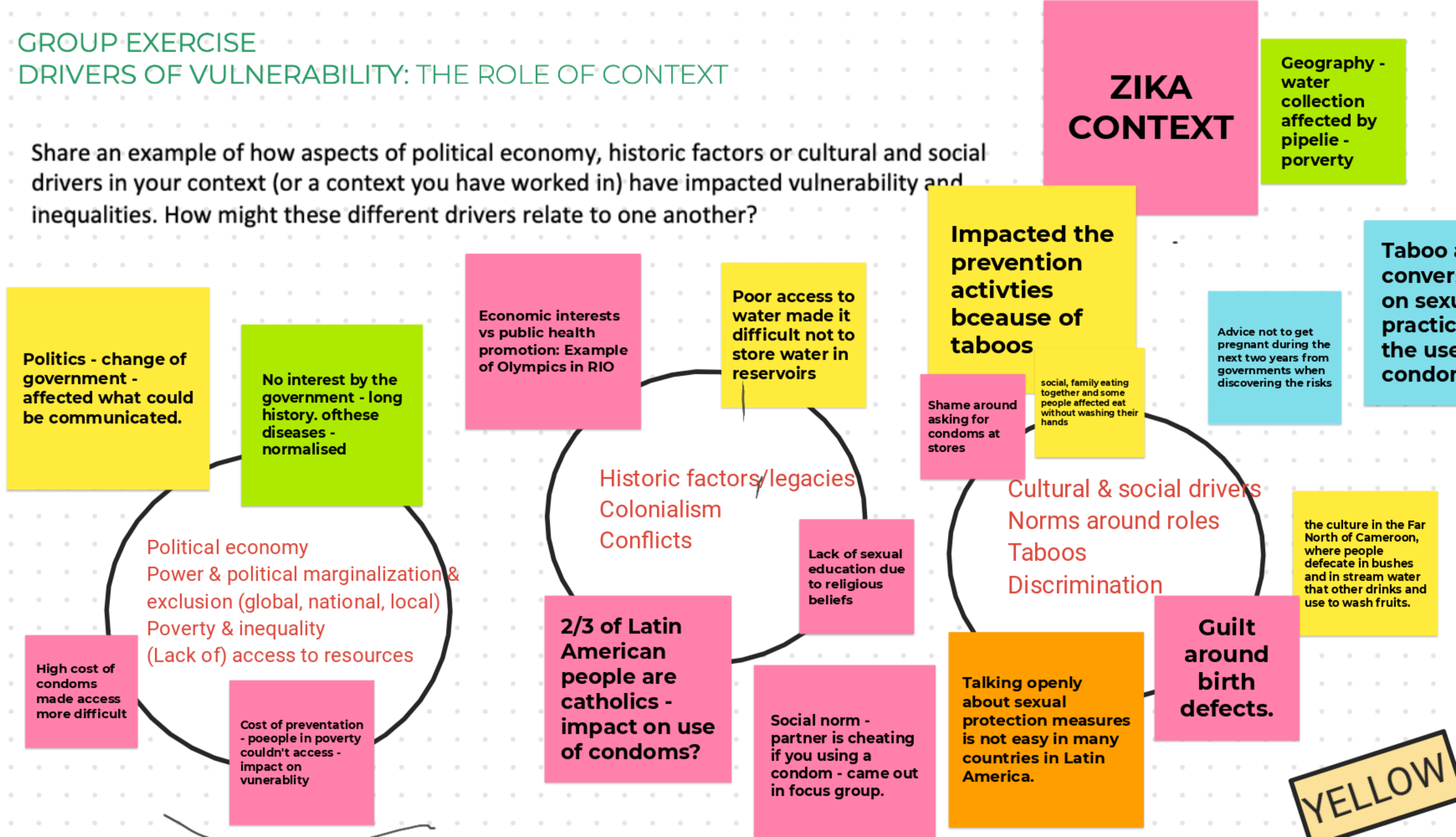
- 1) What caused the situation?
- 2) How it could have been prevented?
- 3) What are the similarities between this situation and Red Cross Red Crescent work in communities?

The interface also shows a top navigation bar with "Bus Service", a page indicator "1/4", a "Share" button, and a bottom toolbar with "Set background" and "Clear frame" options.

GROUP EXERCISE

DRIVERS OF VULNERABILITY: THE ROLE OF CONTEXT

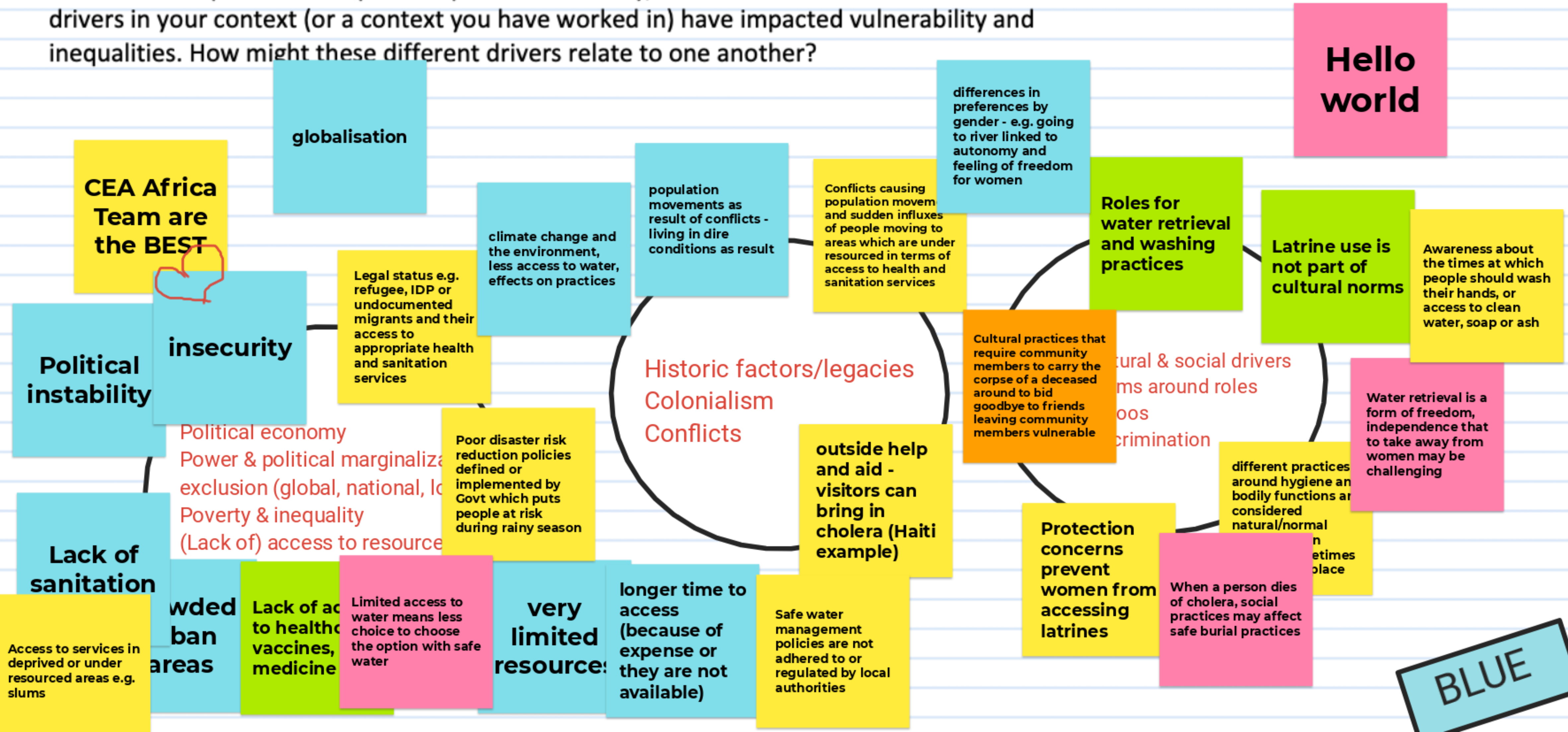
Share an example of how aspects of political economy, historic factors or cultural and social drivers in your context (or a context you have worked in) have impacted vulnerability and inequalities. How might these different drivers relate to one another?



GROUP EXERCISE
DRIVERS OF VULNERABILITY: THE ROLE OF CONTEXT

Cholera example

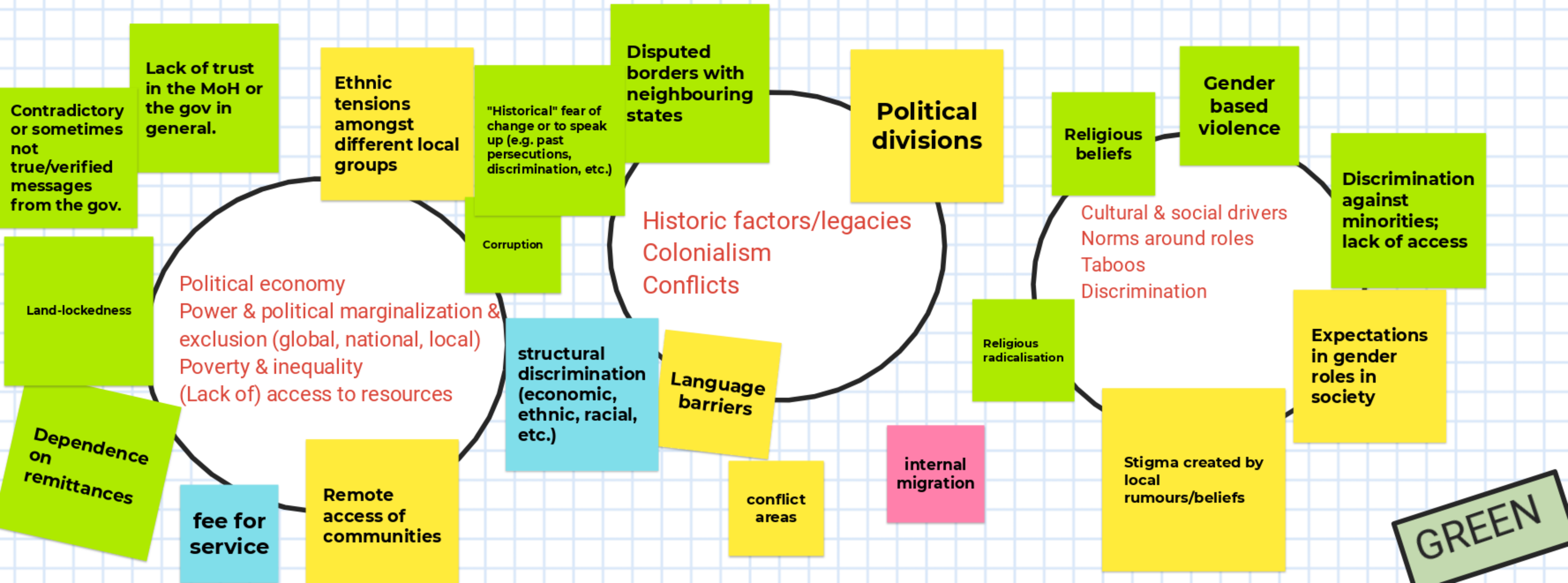
Share an example of how aspects of political economy, historic factors or cultural and social drivers in your context (or a context you have worked in) have impacted vulnerability and inequalities. How might these different drivers relate to one another?



GROUP EXERCISE

DRIVERS OF VULNERABILITY: THE ROLE OF CONTEXT

Share an example of how aspects of political economy, historic factors or cultural and social drivers in your context (or a context you have worked in) have impacted vulnerability and inequalities. How might these different drivers relate to one another?



GROUP EXERCISE

DRIVERS OF VULNERABILITY: THE ROLE OF CONTEXT

Share an example of how aspects of political economy, historic factors or cultural drivers in your context (or a context you have worked in) have impacted vulnerable populations and exacerbated inequalities. How might these different drivers relate to one another?



war: people are forced to stay at home or migrate -- cross-cutting issue amongst all three themes



Rights and regulations - for instance refugees coming to Jordan

Lebanon: people can't get passports. No legal status - people feel stuck and can't provide basic needs

pandemic impacts livelihoods



Colonialism: Example Kenya, land distribution was different to before colonialism and causes tensions between people (especially during election times)



prejudice and discrimination against mothers/women

misinformation and gender dynamics, for instance women not getting permission to get vaccinated due to misinformation on vaccines causing infertility

discrimination of migrants (links to the two other themes)

ORANGE

GROUP EXERCISE

DRIVERS OF VULNERABILITY: THE ROLE OF CONTEXT

Share an example of how aspects of political economy, historic factors or cultural and social drivers in your context (or a context you have worked in) have impacted vulnerability and inequalities. How might these different drivers relate to one another?

Confusion regarding taking different types of vaccines for different doses

Vaccine hesitancy-religious believes vaccine is not halal

to much focused on technology and forgetting people with no access to technology

stigma against migrants

Previous negative experience related to other vaccines

Inaccessible Information around vaccine

Vaccine inequity

Vaccine unavailability

Rumours around safety and efficacy of vaccine

Vulnerable groups in SI - elderly, tribal communities, people with special needs

people are afraid to speak up/ share their concerns

Only included powerful people (not being inclusion)

Political propoganda against vaccine and their manufacturing countries

lose trust from community

International aids / non international aids during the emergency

Disaster response based on administration boundary (local level)

Political economy
Power & political marginalization
exclusion (global, national, Poverty & inequality
(Lack of) access to resources

Historic factors/legacies
Colonialism
Conflicts

Cultural & social drivers
Norms around roles
Taboos
Stigmatization

Trust around vaccine providers

Solomon Islands - remote islands, poor health systems

Lack of information on vaccine

Trust in traditional healing method over vaccine

Solomon Islands - strong religious beliefs

marginalized and minority group are not included and listened

PURPLE

